

Evaluation of Contaminants in Indoor Air and Groundwater at Sampling Location 0065H

700 South 1600 East PCE Plume Site, Salt Lak

The Agency for Toxic Substances and Disease Registry (ATSDR) evaluated the potential health effects of exposure to contaminants within the 700 South 1600 East tetrachloroethylene (PCE) Plume site. ATSDR's letter health consultation describes how they evaluated recent data from residential sampling location 0065H. This fact sheet summarizes ATSDR's findings and recommendations.

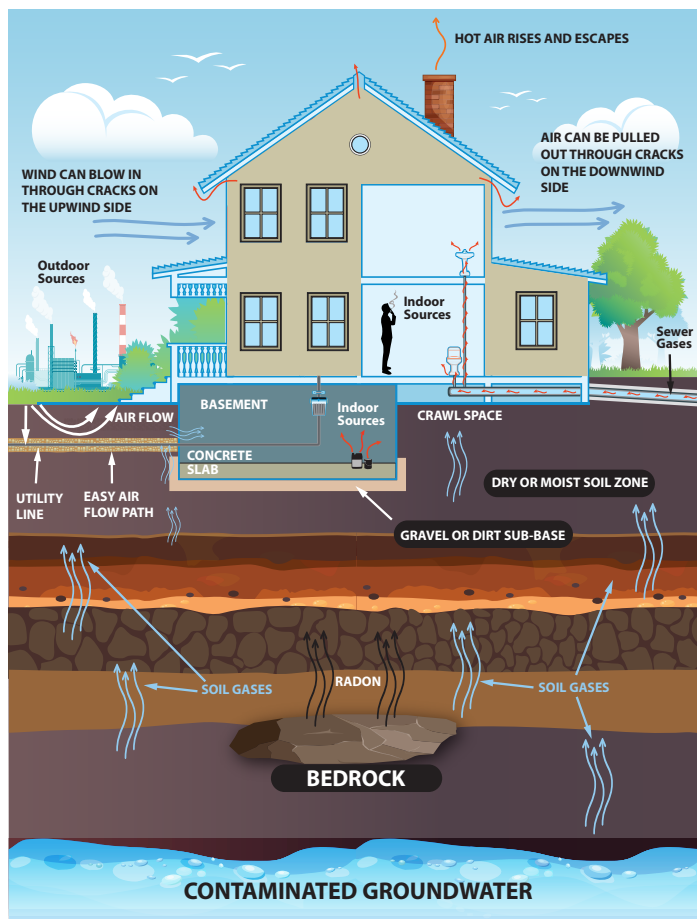
Key Findings

- Indoor air sampling from winter 2019 and 2020 suggest that **contaminants inside residential sampling location 0065H are not expected to harm people's health**. Sampling was not available to evaluate vapor intrusion during the summer.
- Groundwater sampling from 2021 and 2022 indicates that **'PCE and related contaminants around residential sampling location 0065H are not expected to cause vapor intrusion**.

Site Contamination History

The Department of Veterans Affairs Medical Center in Salt Lake City operated a dry-cleaning facility on this site from about 1976 to 1984. At the time, most dry cleaners used tetrachloroethylene (PCE) as a cleaning solvent. PCE and other volatile organic chemicals can enter the groundwater.

When a large quantity of contaminated groundwater moves in the direction of groundwater flow, it is called a plume. When the gases evaporate from the soil or groundwater, they can enter homes through cracks in foundations or utility lines. This is known as vapor intrusion, and it can cause people to breathe in contaminated air.



Vapor intrusion pathway. Credit: ATSDR

ATSDR's Recommendations

- ATSDR recommends VAMC follow additional steps for residential sampling location 0065H:
- Continue to monitor the groundwater concentration and location of the PCE plume.
- Re-sample indoor air of residential sampling location 0065H if groundwater contaminant concentrations are above levels of concern or the PCE plume come within 100 feet of the home.
- ATSDR will continue, upon request, to provide technical assistance to the Department of Veterans Affairs, Utah Department of Health, and Salt Lake City officials.
- ATSDR will continue, upon request, to review data collected by environmental agencies to determine how exposures can affect people's health.
- ATSDR will provide public health education to the people potentially affected at this residence.

How can I learn more?

- Read the original ATSDR public health assessment at [Evaluation of Contamination in Indoor Air, Soil, and Surface Water 700 South 1600 East PCE Plume \(cdc.gov\)](#)
- Read the full ATSDR letter health consultation at [Utah | Public Assessment & Health Consultation | ATSDR \(cdc.gov\)](#)

If you have questions or comments, call ATSDR's regional office representative, Irene Lee, at (303) 870-9890.

You can also call 1-800-CDC-INFO (1-800-232-4636) and ask for information on the 700 South 1600 East PCE Plume site.

About ATSDR

ATSDR is a federal public health agency of the U.S. Department of Health and Human Services. ATSDR works with other agencies, tribal, state, and local governments to study possible health risks in communities where people could come in contact with dangerous chemicals. For more information about ATSDR, visit our website at <http://www.atsdr.cdc.gov/>.