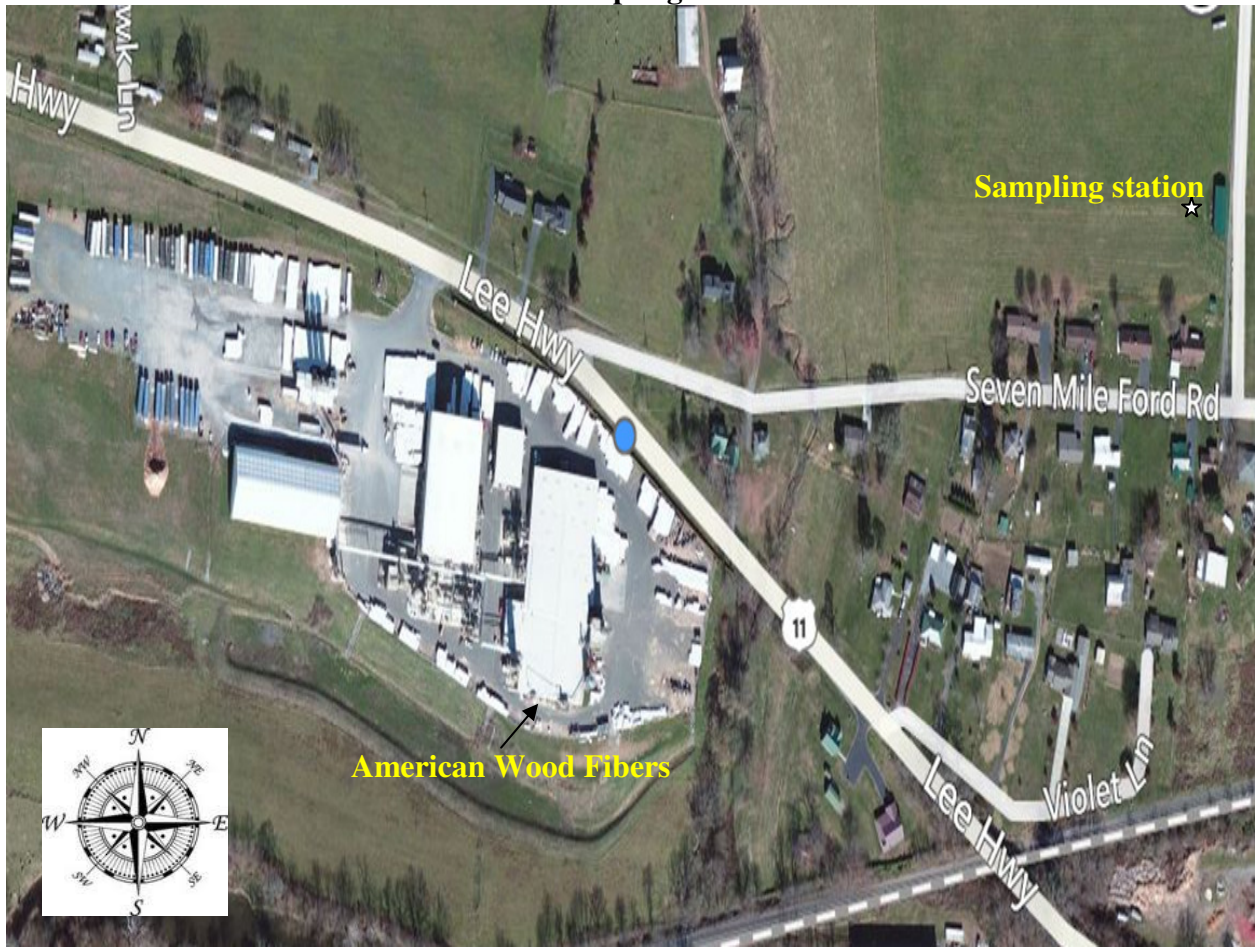


Location of American Wood Fibers and sampling station



PM₁₀ and TSP air monitors.



2009 and 2010 PM₁₀ Annual 2nd Maximum 24-Hour Average Air Monitoring Results from Sampling Stations in Virginia*

Sampling station location	Sampling year	
	2009	2010
Carroll	30	25
Roanoke City	63	33
Culpeper	26	30
Warren	24	28
Winchester City	28	32
Fredericksburg City	28	40
King William	27	31
High	63	
Low	24	
Average	32	

(Source: EPA) *All results in $\mu\text{g}/\text{m}^3$. PM₁₀=particulate matter measuring less than 10 μm . **Bold face**=high, low, and average for all 2009 and 2010 results.