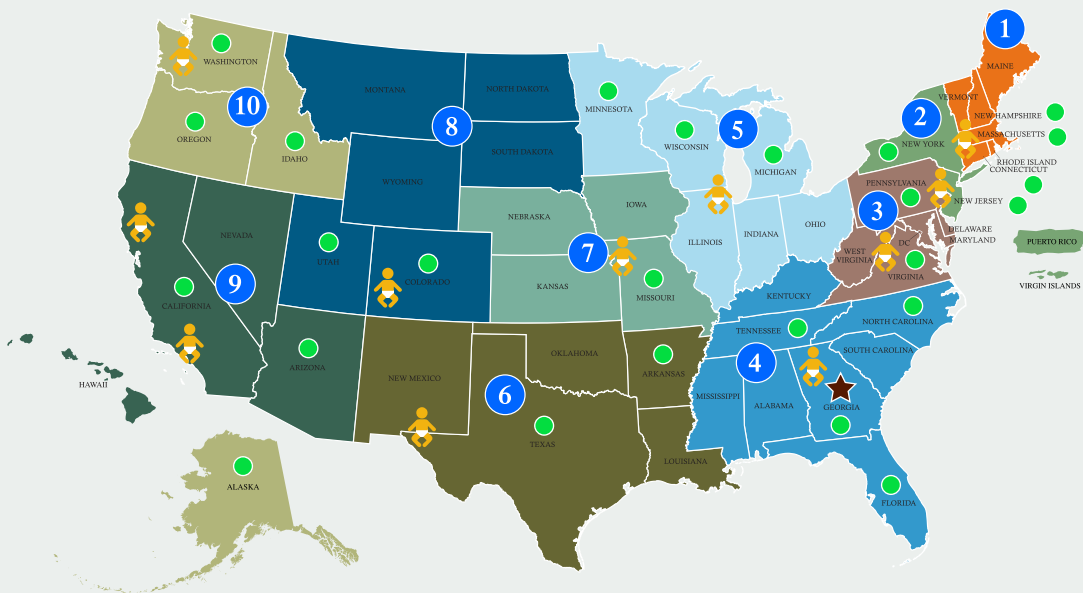


## Strengthening the Environmental Health Workforce Across the Nation



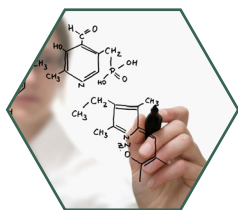
### Protecting communities relies on a wide range of professional expertise:

- Toxicologists
- Health Assessors and Environmental Scientists
- Engineers and Physical Scientists
- Health Education and Communication Specialists
- Environmental Health Clinicians
- Epidemiologists

ATSDR provides on-the-ground, localized support to communities through the work of 400 Environmental Health Professionals located in

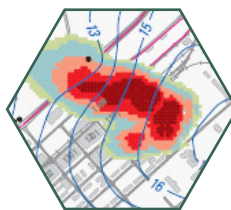
- 10 Regional Offices
- 25 State Public Health Departments
- 11 Pediatric Environmental Health Specialty Units
- ★ Headquarters

## Advancing Environmental Science and Medicine



### ToxProfiles™

ATSDR's ToxProfiles™ and associated resources provide comprehensive information on hundreds of chemicals for scientists, physicians and regulators. This information helps ATSDR determine when exposures in communities pose health risks.



### Mapping, Modeling, and Lab Analysis

ATSDR uses state-of-the-art tools and resources like geospatial analysis and modelling to understand how people are exposed to chemicals from the environment. ATSDR also leverages resources available at the Centers for Disease Control and Prevention, like laboratory analysis, to answer community questions.



### Environmental Medicine

In addition to educating health providers near the sites where we work, ATSDR provides training and resources to health providers across the country to help improve the diagnosis and treatment of environmentally-related illnesses.



### Registries, Studies, and Surveillance

ATSDR is working to better understand the relationship between exposures and health outcomes, and the distribution of illnesses associated with environmental exposures. The results of these activities inform future assessments and decision-making to protect health.