

Tour Guide for the ATSDR Data Conversion Tool

Evaluation Draft - Data Conversion Tool

1) Import Lab Data 2) Export Data 3) Close 15July2008

Sample IDs to Exclude Analysis Codes to Include Field Mapping CASN Issues

Select Sample ID field

List of ID number in data. IDs to exclude.

 add >>

remove <<

June 23, 2014

Who We Are - ATSDR

- ATSDR is a federal public health agency of the U.S. Department of Health and Human Services.
- Our goal is to prevent harmful exposures and diseases related to toxic substances.
- Our Brownfields/Land Reuse Initiative integrates public health principles into redevelopment.

Data Conversion Tool – for use with the BFLR Site Tool

- This tool is used to process analytical data (in the form of a spread sheet) for importing and processing by the ATSDR Brownfields/Land Reuse Site Tool.
- Users select sample ID numbers to either include or exclude (typically used to exclude calibration values often included with analytical data).
- Requires Microsoft® Access®

Data Conversion Tool – for use with the BFLR Site Tool

Click on “1) Import Lab Data.”

Evaluation Draft - Data Conversion Tool

1) Import Lab Data 2) Export Data 3) Close 15 July 2008

Sample IDs to Exclude Analysis Codes to Include Field Mapping CASN Issues

Select Sample ID field

List of ID number in data.

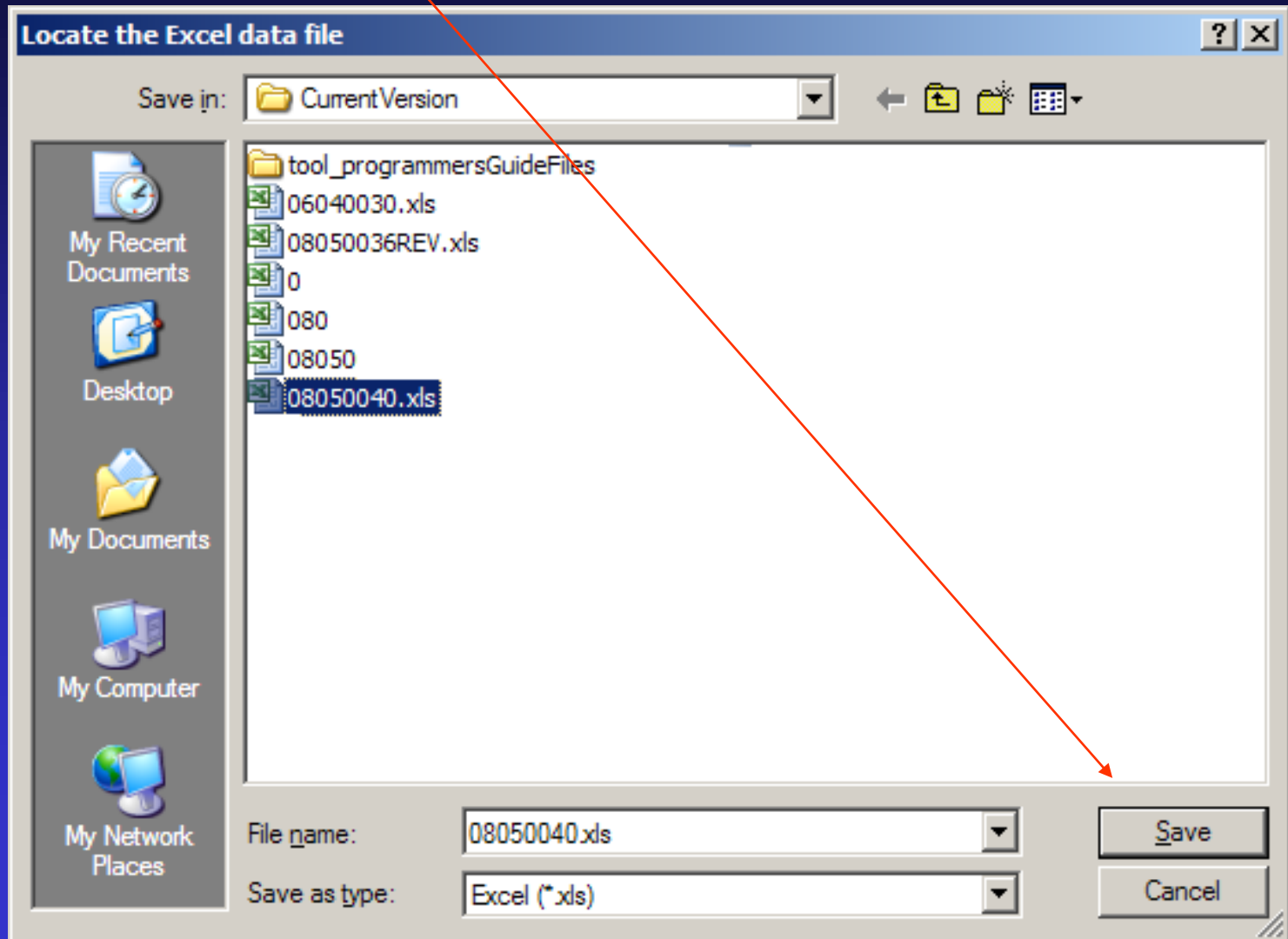
IDs to exclude.

add >>

remove <<

Data Conversion Tool – for use with the BFLR Site Tool

Be sure the Excel data file has a header row, select file then click on “Save.”



Data Conversion Tool – for use with the BFLR Site Tool

Select the field that represents the sample ID

Evaluation Draft - Data Conversion Tool

1) Import Lab Data 2) Export Data 3) Close 15July2008

Sample IDs to Exclude Analysis Codes to Include Field Mapping CASN Issues

Select Sample ID field

List of ID number

IDs to exclude.

- LOCATION_DESCRIPTION
- SURVEY_NAME
- PROJECT_NUMBER
- SAMPLE_NUMBER
- STATION_ID
- SAMPLE_ID**
- ANALYSIS_NAME
- ANALYSIS_CODE

Data Conversion Tool – for use with the BFLR Site Tool

Select Sample ID numbers to EXCLUDE from the analysis (usually performance samples are excluded).

Evaluation Draft - Data Conversion Tool

1) Import Lab Data 2) Export Data 3) Close 15July2008

Sample IDs to Exclude Analysis Codes to Include Field Mapping CASN Issues

Select Sample ID field
SAMPLE_ID

List of ID number in data.

- AA83029
- AA83030**
- AA83031
- AA83032
- AA83034
- AA83035
- AA83036
- AA83037
- AA83038
- AA83039
- AA83040
- AA83041
- AA83042
- AA83043
- AA83044
- AA83045
- AA83046
- AA83047

IDs to exclude.

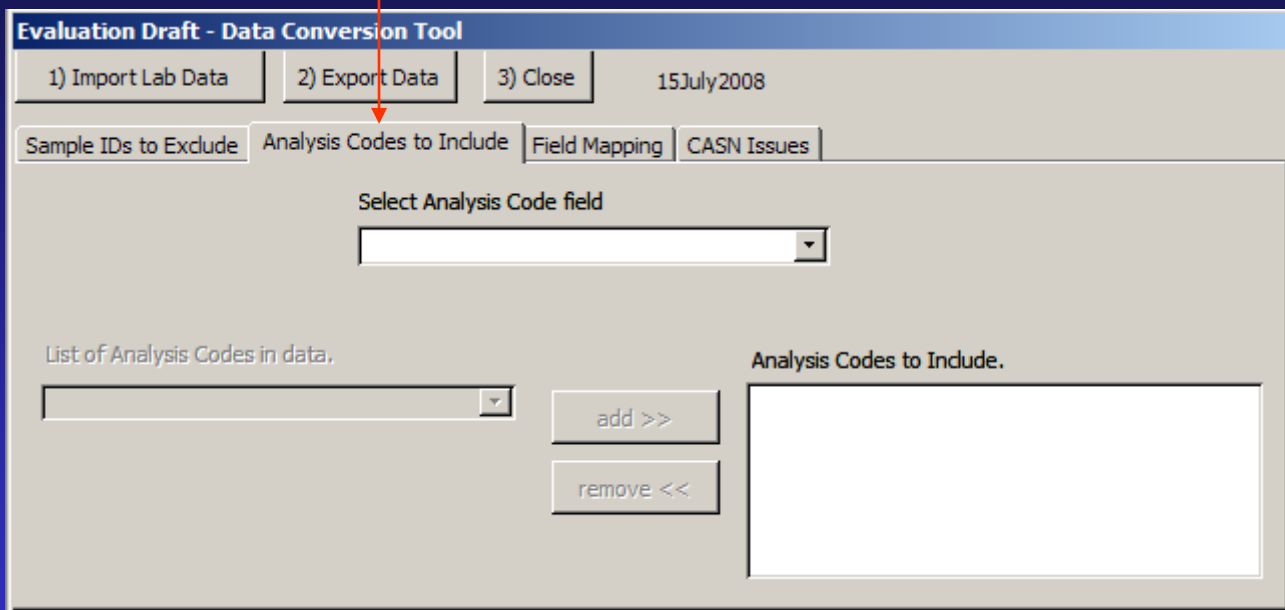
AA83033

add >>

remove <<

Data Conversion Tool – for use with the BFLR Site Tool

Click on the “Analysis Codes to Include” tab.



The screenshot shows a software window titled "Evaluation Draft - Data Conversion Tool". At the top, there are three buttons: "1) Import Lab Data", "2) Export Data", and "3) Close", along with the date "15 July 2008". Below these are four tabs: "Sample IDs to Exclude", "Analysis Codes to Include", "Field Mapping", and "CASN Issues". The "Analysis Codes to Include" tab is selected, and a red arrow points to it from the text above. The main area of the window contains a "Select Analysis Code field" dropdown menu. Below this, there are two sections: "List of Analysis Codes in data." with a dropdown menu, and "Analysis Codes to Include." with a large empty rectangular box. Between these two sections are two buttons: "add >>" and "remove <<".

Data Conversion Tool – for use with the BFLR Site Tool

Select field that represents the analysis code.

Evaluation Draft - Data Conversion Tool

1) Import Lab Data 2) Export Data 3) Close 15 July 2008

Sample IDs to Exclude Analysis Codes to Include **Field Mapping** CASN Issues

Select Analysis Code field

LOCATION_DESCRIPTION
SURVEY_NAME
PROJECT_NUMBER
SAMPLE_NUMBER
STATION_ID
SAMPLE_ID
ANALYSIS_NAME
ANALYSIS_CODE

List of Analysis Codes in data. Codes to Include.

Data Conversion Tool – for use with the BFLR Site Tool

Select analysis codes to INCLUDE.

The screenshot shows the 'Evaluation Draft - Data Conversion Tool' interface. At the top, there are three buttons: '1) Import Lab Data', '2) Export Data', and '3) Close', along with the date '15July2008'. Below these are four tabs: 'Sample IDs to Exclude', 'Analysis Codes to Include', 'Field Mapping', and 'CASN Issues'. The 'Analysis Codes to Include' tab is active. A dropdown menu labeled 'Select Analysis Code field' is set to 'ANALYSIS_CODE'. Below this, there are two main sections: 'List of Analysis Codes in data.' and 'Analysis Codes to Include.'. The 'List of Analysis Codes in data.' section contains a list box with the following items: '\$AIRTX', '\$B_AIRTX', '\$IUAIRTX', '\$IUBAIR', '\$IUSDAIR', '\$QCAIRTX', '\$SDAIRTX', and '\$SPAIRTX'. The '\$AIRTX' item is selected. To the right of this list are two buttons: 'add >>' and 'remove <<'. The 'Analysis Codes to Include.' section is an empty rectangular box. A red arrow points from the text 'Select analysis codes to INCLUDE.' to the 'add >>' button.

Data Conversion Tool – for use with the BFLR Site Tool

Click on “Field Mapping” then map all fields using the fields in the imported file.

Evaluation Draft - Data Conversion Tool

1) Import Lab Data 2) Export Data 3) Close 15 July 2008

Sample IDs to Exclude Analysis Codes to Include **Field Mapping** CASN Issues

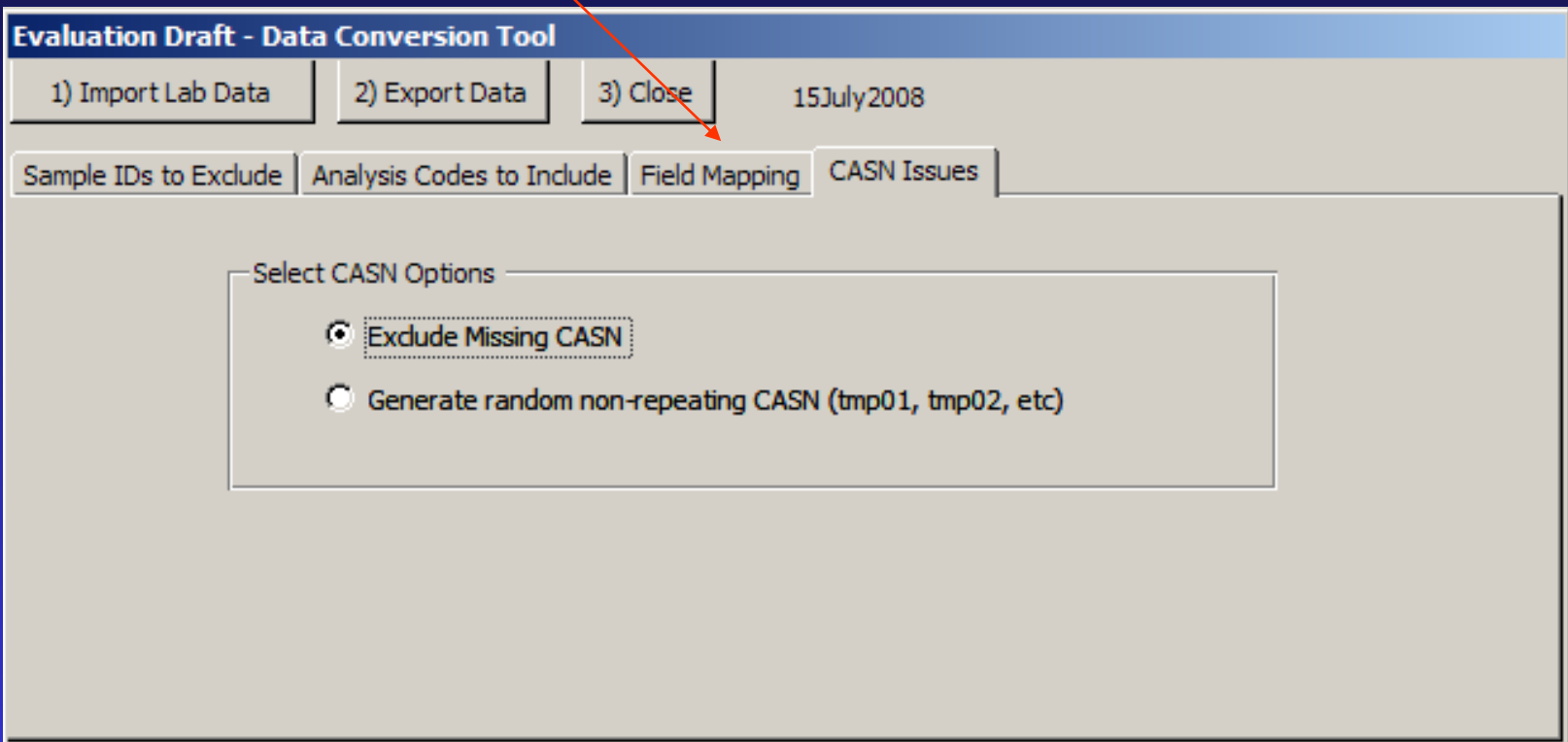
Fields In Data File

- ANALYSIS_CODE
- ANALYTE_NAME
- MATRIX
- CAS_NUMBER
- ANALYSIS_UNIT
- COMBINATION_RESULT
- ANALYTE_MDL
- QUALIFIER

<input type="checkbox"/>	Map to ID	SAMPLE_ID
<input type="checkbox"/>	Map to CHEM	ANALYTE_NAME
<input type="checkbox"/>	Map to CASN	CAS_NUMBER
<input type="checkbox"/>	Map to RESULTS	COMBINATION_RESULT
<input type="checkbox"/>	Map to DL	ANALYTE_MDL
<input type="checkbox"/>	Map to MEDIA	MATRIX
<input type="checkbox"/>	Map to UNITS	ANALYSIS_UNIT
<input type="checkbox"/>	Map to Analysis Code	ANALYSIS_CODE

Data Conversion Tool – for use with the BFLR Site Tool

Click on “CASN Issues” then select CASN number option.



Data Conversion Tool – for use with the BFLR Site Tool

Click on “2) Export Data.”

Evaluation Draft - Data Conversion Tool

1) Import Lab Data 2) Export Data 3) Close 15 July 2008

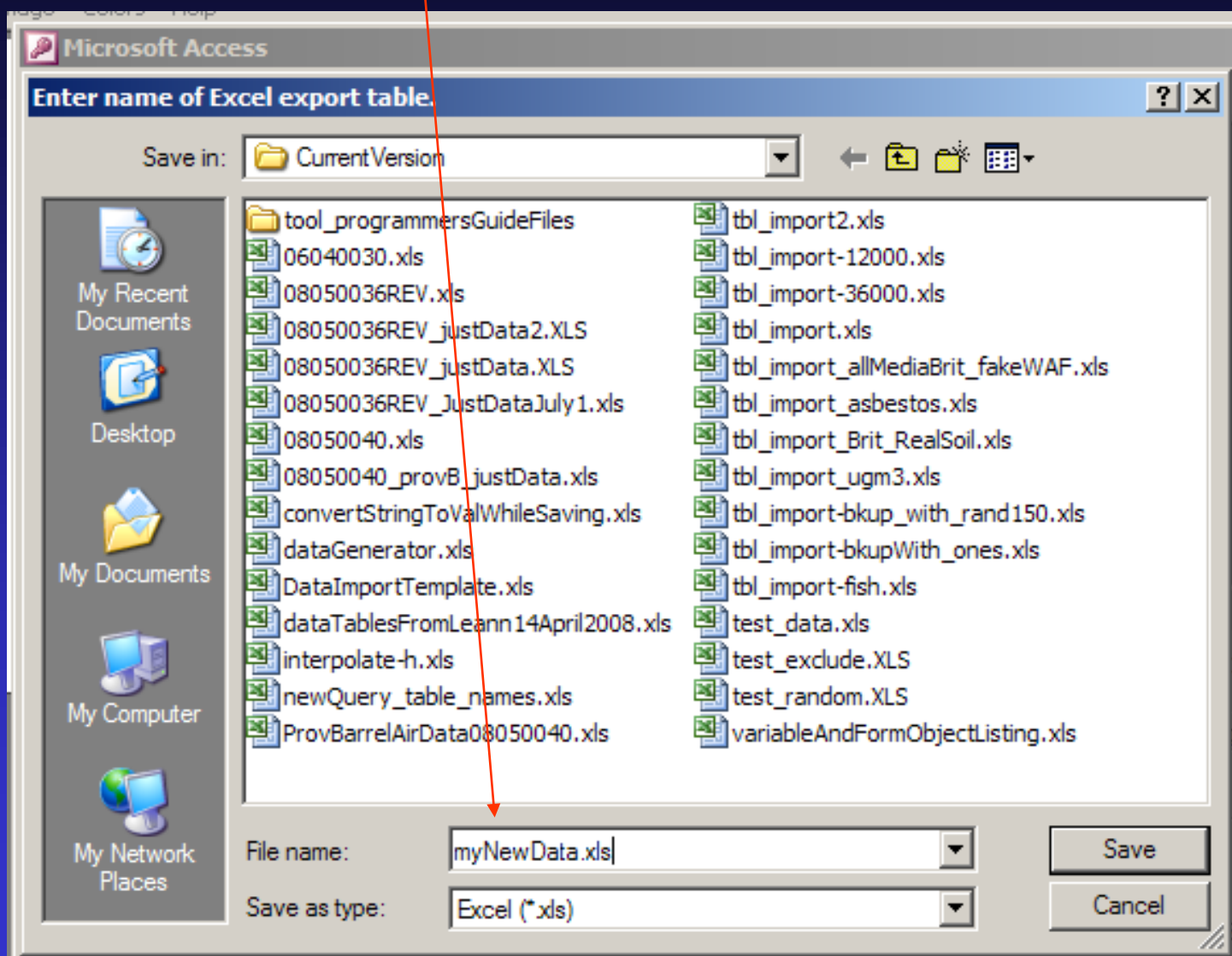
Sample IDs to Exclude Analysis Codes to Include Field Mapping CASN Issues

Select CASN Options

- Exclude Missing CASN
- Generate random non-repeating CASN (tmp01, tmp02, etc)

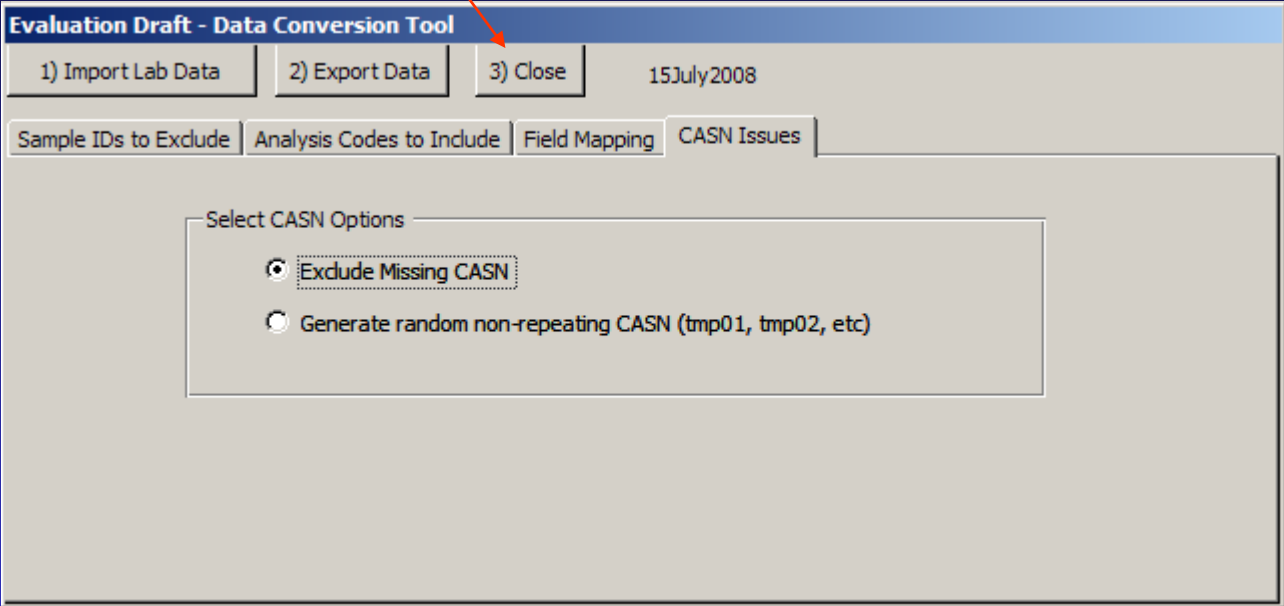
Data Conversion Tool – for use with the BFLR Site Tool

Enter a filename for use by the Site Tool.



Data Conversion Tool – for use with the BFLR Site Tool

Click “3) Close” to exit.



For more information

ATSDR Brownfields/ Land Reuse Team:
atsdr.landreuse@cdc.gov